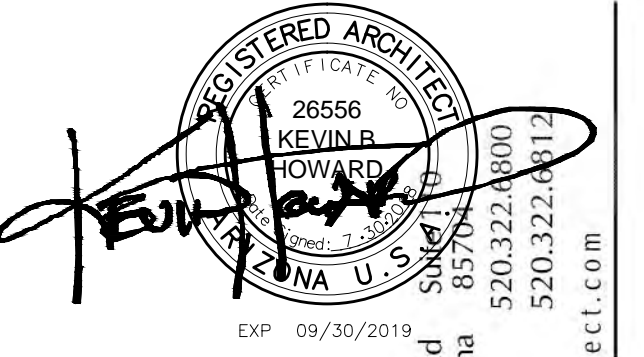




1st FLOOR
SCALE: 1/16" = 1'-0"



Kevin B. Howard
ARCHITECTS
INCORPORATED
AIA

GRANDE Vita
10243 E. Hampton Ave, Mesa, Arizona, 85209

RESIDENTIAL SENIOR
INDEPENDENT LIVING

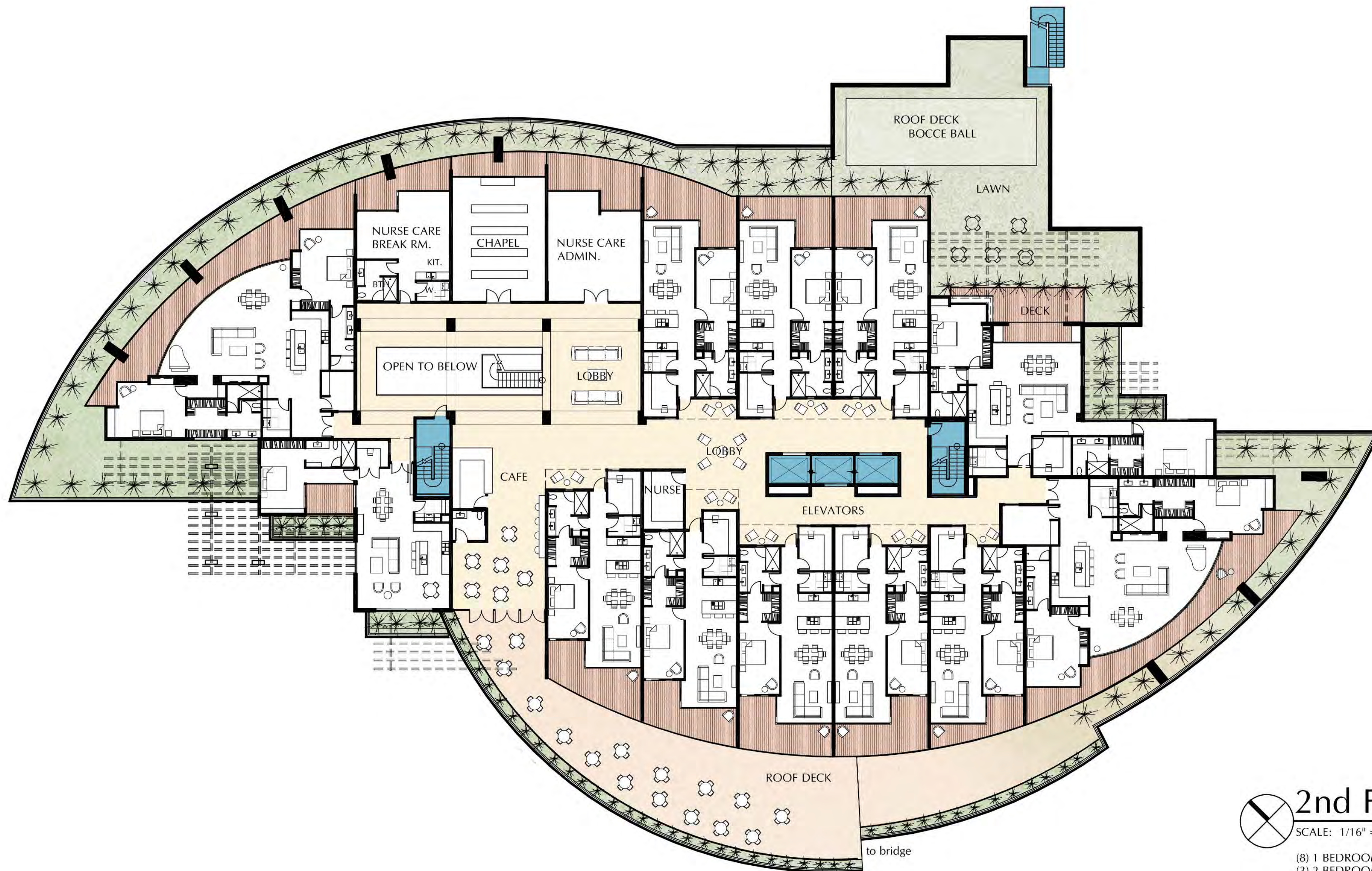
© 2018 Kevin B. Howard Architects, Inc.
All rights reserved.
THESE DRAWINGS ESTABLISH THE GENERAL
STANDARDS OF QUALITY AND DETAIL FOR
DEVELOPING A CONSTRUCTION CONTRACT.
ALL INFORMATION ON THESE DRAWINGS ARE
THE PROPERTY OF KBH ARCHITECTS AND
ARE INTENDED FOR THIS PROJECT ONLY.

Job: 2017-12
Date: 07.30.2018

REVISIONS:

Drawn By:
J. E. Brown
H.S. Walker
Checked By:
J. E. Brown

A4.0



2nd FLOOR
SCALE: 1/16" = 1'-0"

(8) 1 BEDROOM + DEN
(3) 2 BEDROOM + DEN/GREAT RM
(1) 1 BEDROOM + DEN/GREAT RM



3rd - 9th FLOOR
SCALE: 1/16" = 1'-0"

(14) 1 BEDROOM + DEN
(1) 2 BEDROOM + DEN/GREAT RM
(3) 1 BEDROOM + DEN/GREAT ROOM

RESIDENTIAL SENIOR INDEPENDENT LIVING

© 2018 Kevin B Howard Architects, Inc.
All rights reserved.
THESE DRAWINGS ESTABLISH THE GENERAL
STANDARDS OF QUALITY AND DETAIL FOR
DEVELOPING A CONSTRUCTION CONTRACT.
ALL INFORMATION ON THESE DRAWINGS ARE
THE PROPERTY OF KBH ARCHITECTS AND
ARE INTENDED FOR THIS PROJECT ONLY.

Job: 2017-12
Date: 09.04.2018

REVISIONS:

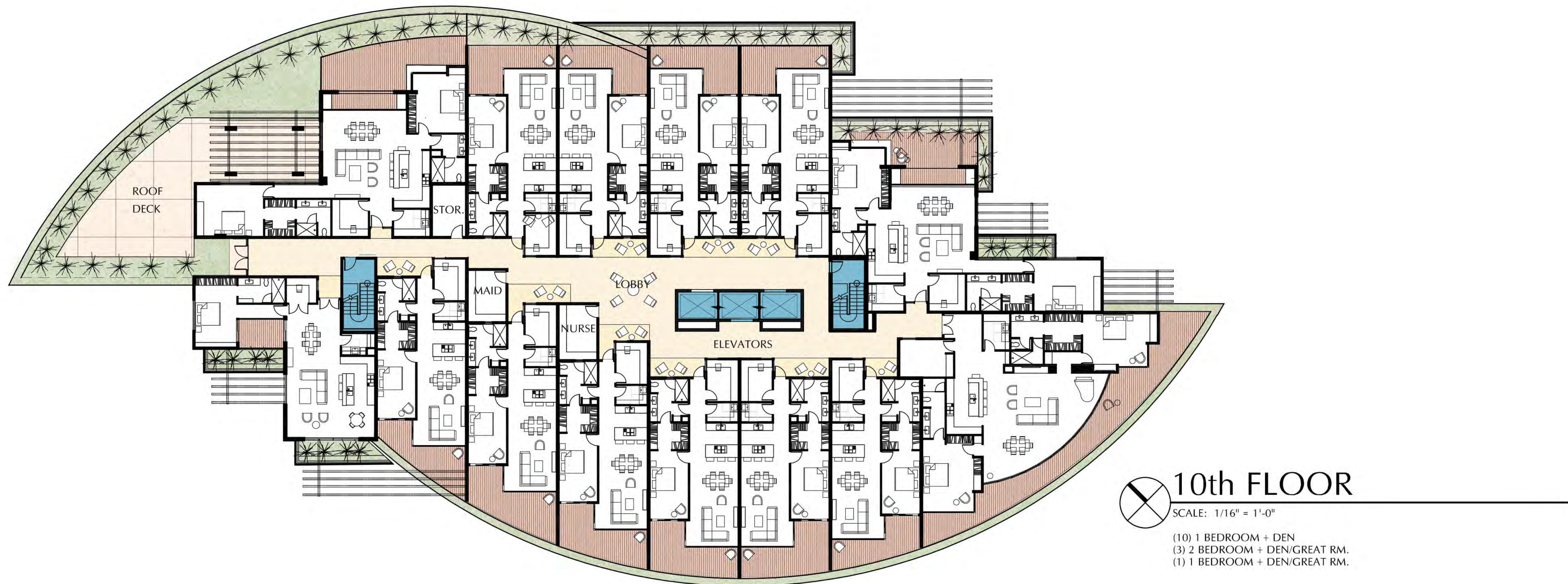
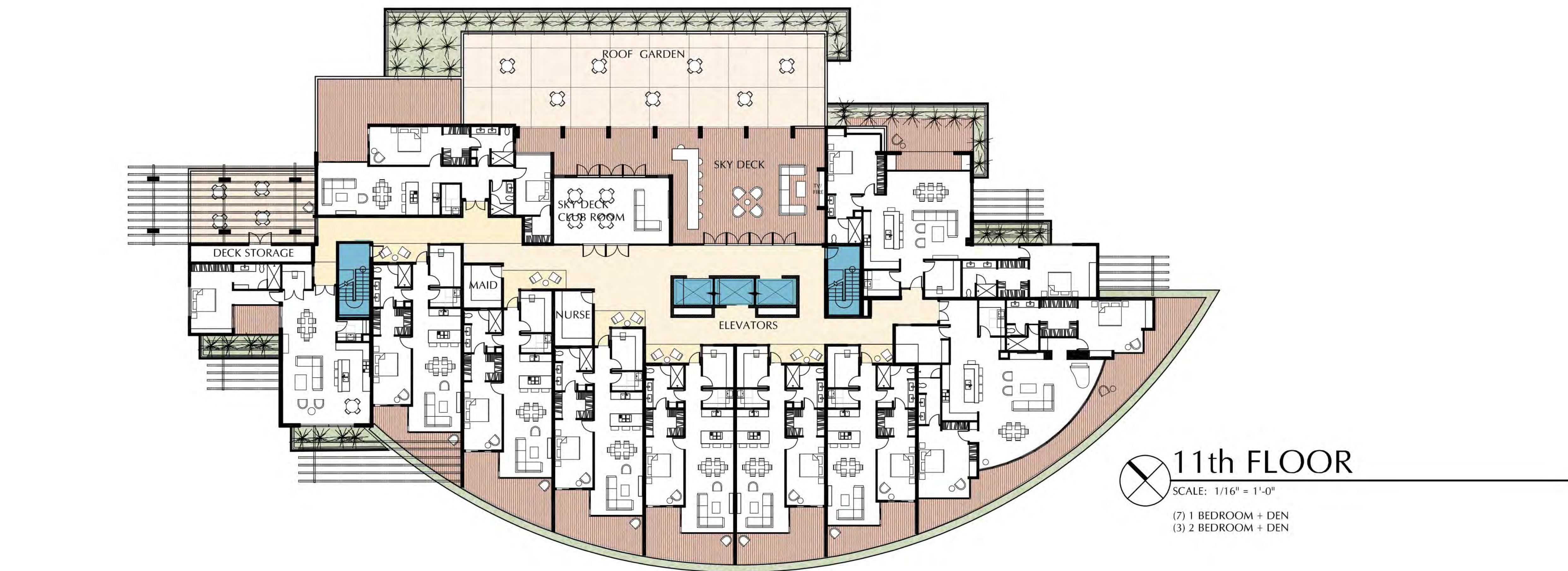
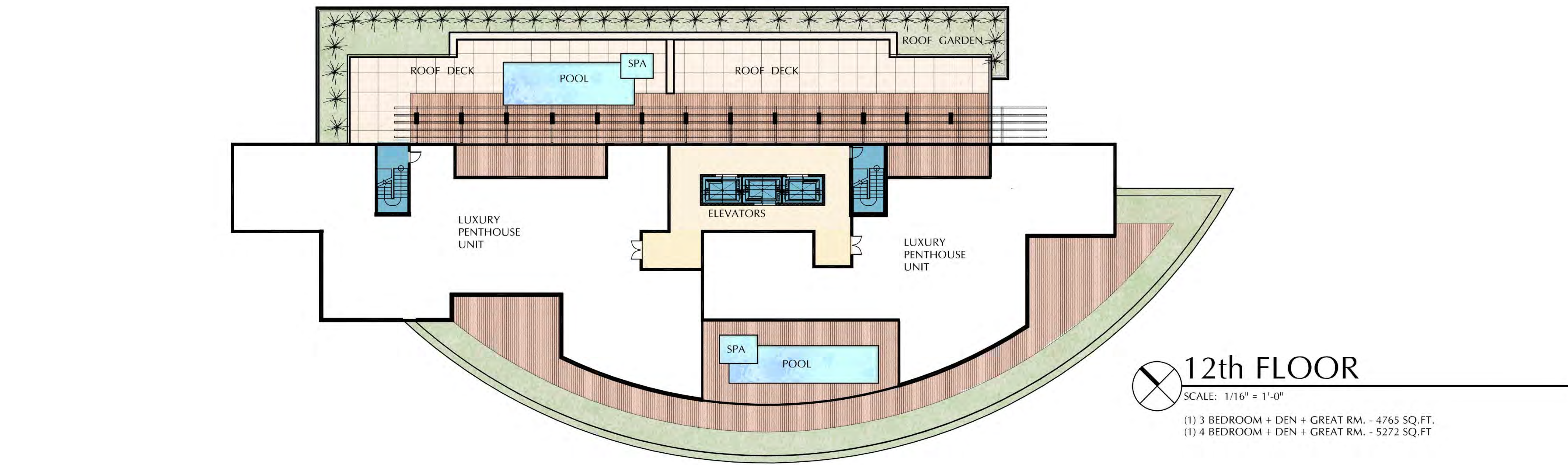
Drawn By:
J. E. Brown
H.S. Walker
Checked By:
J. E. Brown

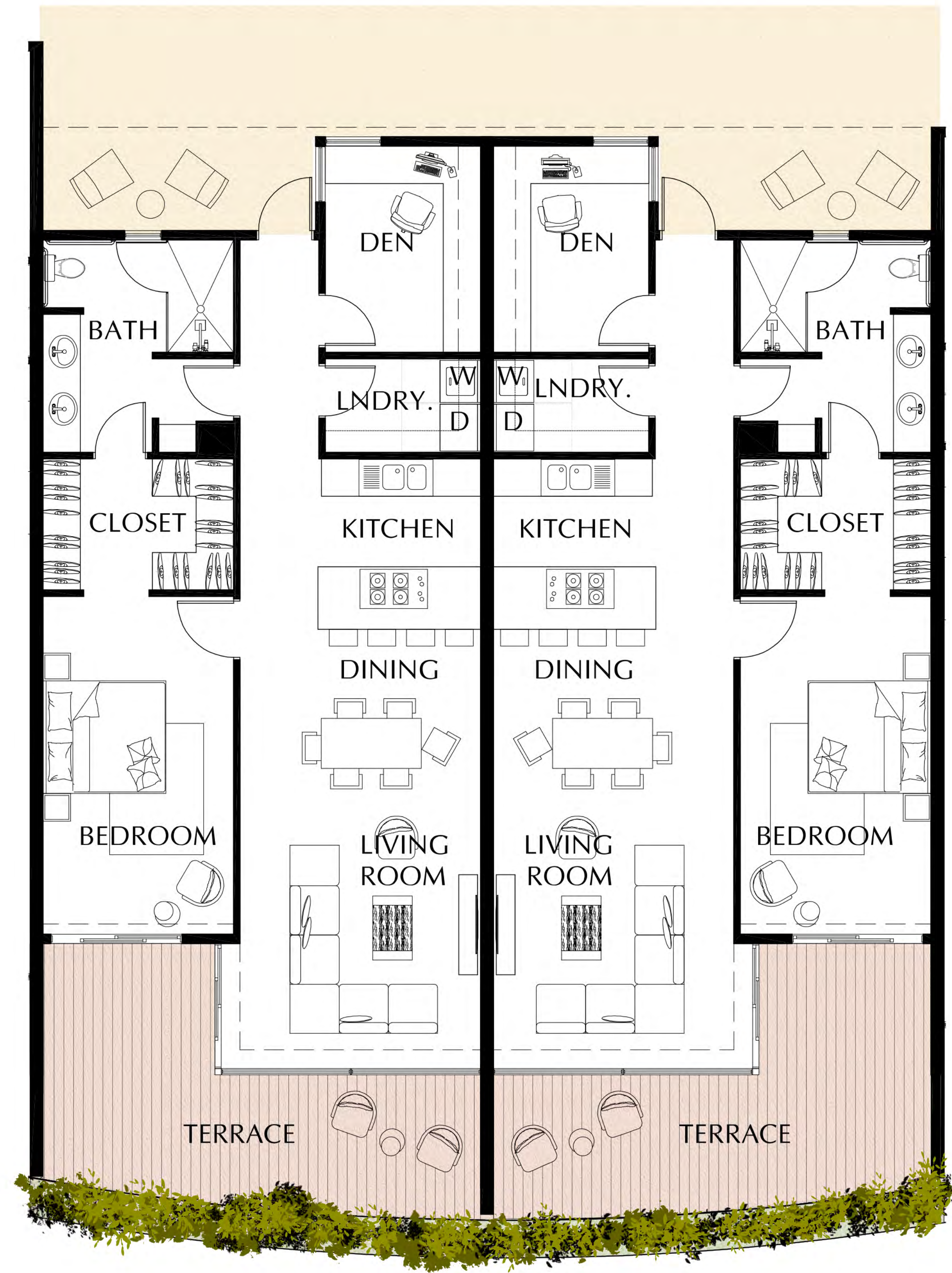
A4.1

GRANDE Vita
a Biocity Enterprise
10243 E. Hampton Ave, Mesa, Arizona, 85209

A Kevin B Howard
ARCHITECTS
Incorporated AIA

REGISTERED ARCHITECT
26556
KEVIN B. HOWARD
ARCHITECT
8339 N Oracle Rd
Suite 110
Scottsdale, Arizona
85258
Phone: 480.322.6800
Fax: 480.322.6812
www.kbharchitect.com
EXP: 09/30/2019





SINGLE BEDROOM UNIT - TYP

SCALE: 1/4" = 1'-0"

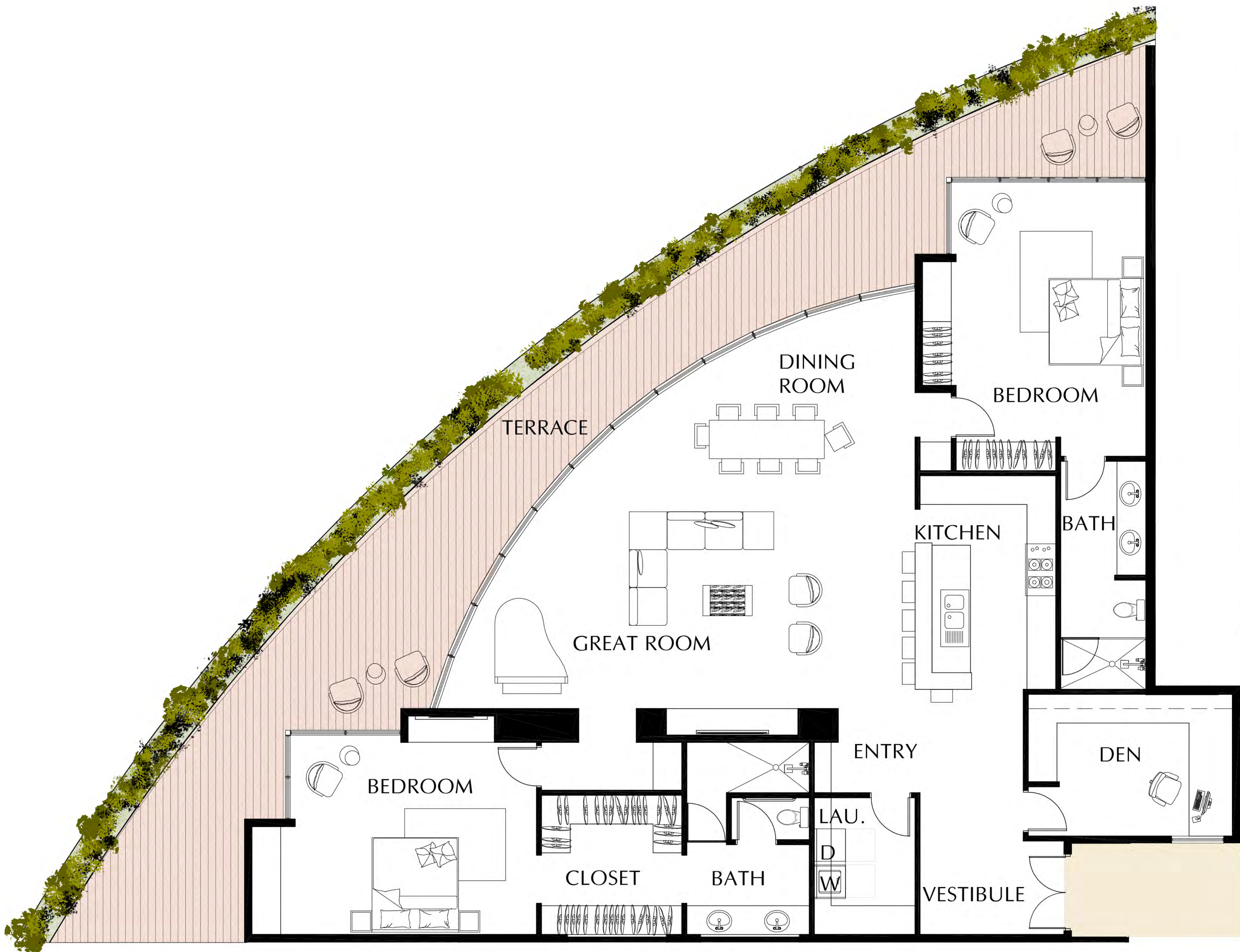
1060 SQ. FT. EACH



SINGLE BEDROOM UNIT - CORNER

SCALE: 1/4" = 1'-0"

1260 SQ. FT.



DOUBLE BEDROOM UNIT - END

SCALE: 1/4" = 1'-0"

2300 SQ. FT.



DOUBLE BEDROOM UNIT - CORNER

SCALE: 1/4" = 1'-0"

1810 SQ. FT.



NORTH-EAST ELEVATION

SCALE: 1/16" = 1'-0"



NORTH-WEST ELEVATION

SCALE: 1/16" = 1'-0"

KEYNOTES AND SPECIFICATIONS

- A. ALL COLORS, SIZES, AND MATERIALS TO BE VERIFIED WITH ARCHITECT PRIOR TO CONSTRUCTION FOR COORDINATION WITH DRAWINGS.
B. SEE ELECTRICAL PLAN FOR COORDINATION WITH POWER REQUIREMENTS FOR ALL ITEMS.
C. INSTALLERS TO FOLLOW ALL STANDARDS AND RECOMMENDATIONS OF MANUFACTURER SPECIFICATIONS.
D. FOR BUILT-IN CABINETRY REFER TO ARCHITECTURAL INTERIOR ELEVATIONS.
E. SUBMIT ALL SHOP DRAWINGS OR SUBSTITUTE SPECIFICATIONS TO ARCHITECT FOR APPROVAL AND COORDINATION PRIOR TO CONSTRUCTION.
1. VITRO ARCHITECTUREAL GLASS PPG SOLARBLUE® GLASS CURTAIN WALL GLAZING SYSTEM
2. VITRO ARCHITECTUREAL GLASS PPG SOLARBLUE® GLASS STORE FRONT GLAZING SYSTEM
3. VITRO ARCHITECTUREAL GLASS PPG SOLARBLUE® GLASSOPERABLE GLAZING SYSTEM
4. "ALUCABOND" METAL PANEL SYSTEM (OR EQUAL)
5. EIFS "DRYVIT" SYNTHETIC STUCCO SYSTEM (OR EQUAL)
6. PRE-FINISHED METAL FASCIA/22 GAUGE
7. METAL RAILING SYSTEM
8. GLASS RAILING SYSTEM
9. STEEL TRELLIS DETAIL
10. NATURAL STONE VENEER
11. TILE VENEER (CERAMIC OR PORCELAIN)
12. PRE-FINISHED METAL SIDING (22 GAUGE)

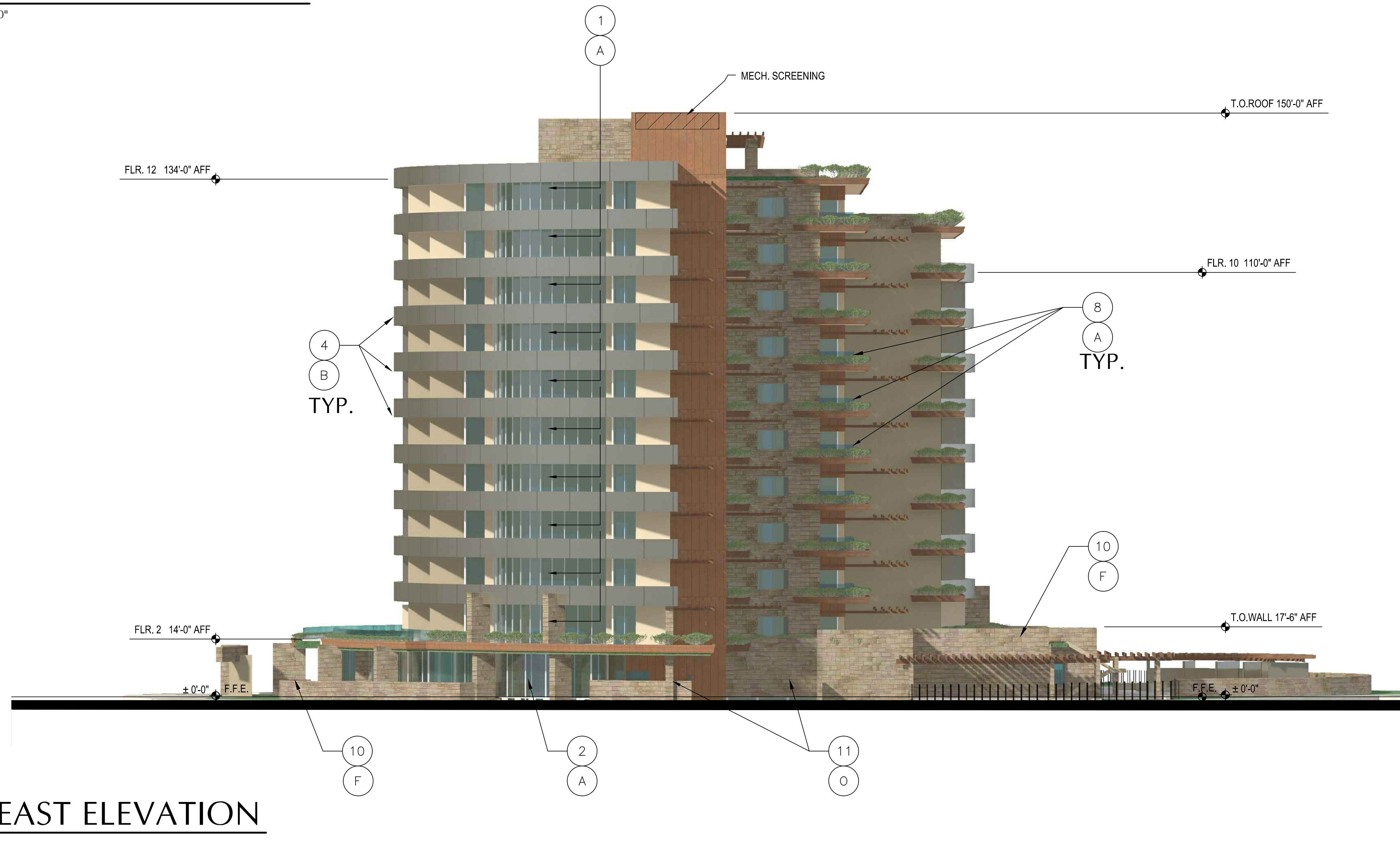
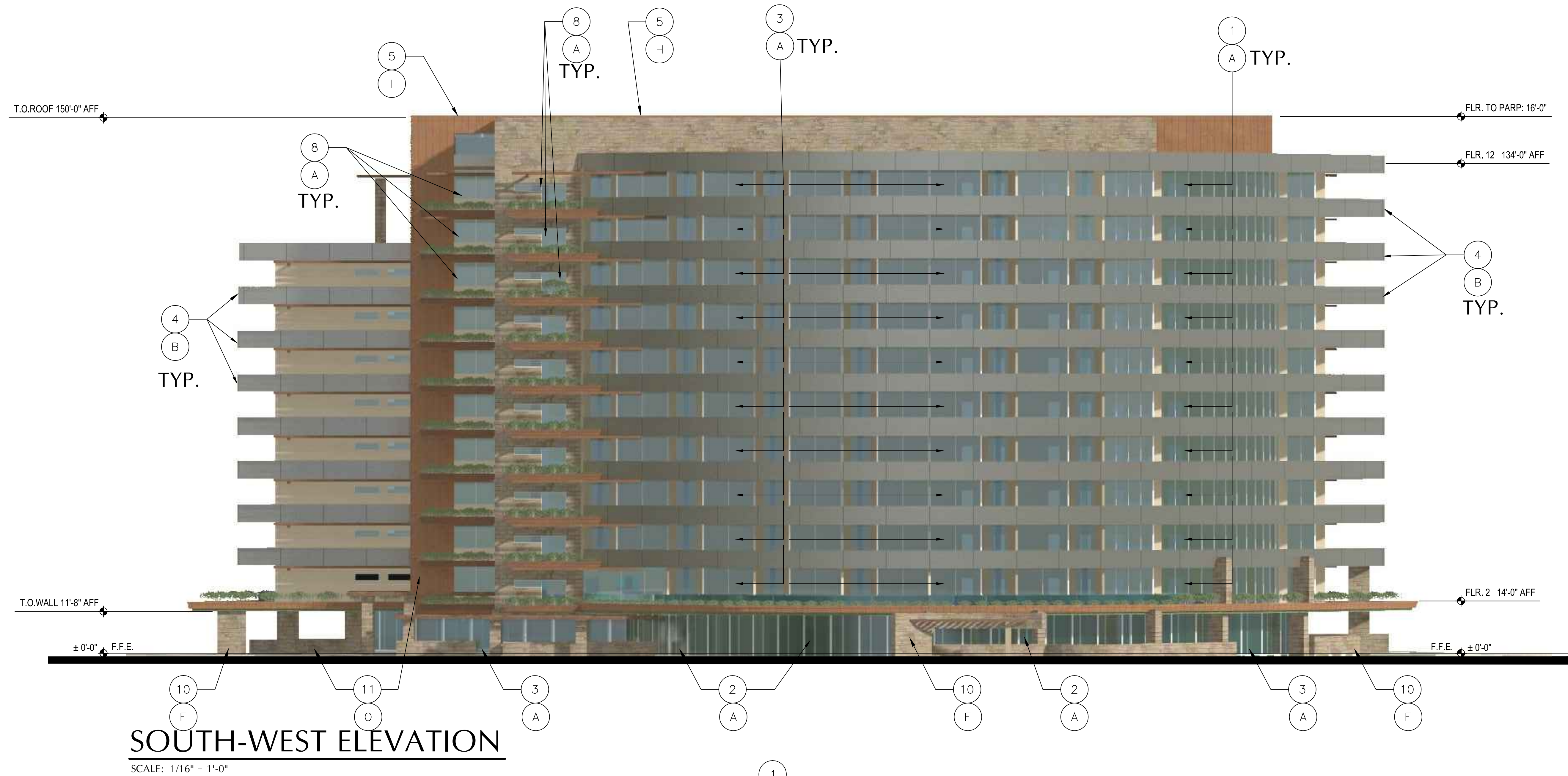
RESIDENTIAL SENIOR
INDEPENDENT LIVING
EXTERIOR ELEVATIONS

© 2018 Kevin B Howard Architects, Inc.
All rights reserved.
THESE DRAWINGS ESTABLISH THE GENERAL STANDARDS OF QUALITY AND DETAIL FOR DEVELOPING A CONSTRUCTION CONTRACT. ALL INFORMATION ON THESE DRAWINGS ARE THE PROPERTY OF KBH ARCHITECTS AND ARE INTENDED FOR THIS PROJECT ONLY.

Job: 2017-12
Date: 09.24.2018

REVISIONS:

Drawn By:
J. E. Brown
H.S. Walker
Checked By:
J. E. Brown



- KEYNOTES AND SPECIFICATIONS**
- ALL COLORS, SIZES, AND MATERIALS TO BE VERIFIED WITH ARCHITECT PRIOR TO CONSTRUCTION FOR COORDINATION WITH DRAWINGS.
 - SEE ELECTRICAL PLAN FOR COORDINATION WITH POWER REQUIREMENTS FOR ALL ITEMS.
 - INSTALLERS TO FOLLOW ALL STANDARDS AND RECOMMENDATIONS OF MANUFACTURER SPECIFICATIONS.
 - FOR BUILT-IN CABINETRY REFER TO ARCHITECTURAL INTERIOR ELEVATIONS.
 - SUBMIT ALL SHOP DRAWINGS OR SUBSTITUTE SPECIFICATIONS TO ARCHITECT FOR APPROVAL AND COORDINATION PRIOR TO CONSTRUCTION.
- VITRO ARCHITECTUREAL GLASS PPG SOLARBLUE® GLASS CURTAIN WALL GLAZING SYSTEM
 - VITRO ARCHITECTUREAL GLASS PPG SOLARBLUE® GLASS STORE FRONT GLAZING SYSTEM
 - VITRO ARCHITECTUREAL GLASS PPG SOLARBLUE® GLASSOPERABLE GLAZING SYSTEM
 - "ALUCABOND" METAL PANEL SYSTEM (OR EQUAL)
 - EIRS - "DRY VIT" SYNTHETIC STUCCO SYSTEM (OR EQUAL)
 - PRE-FINISHED METAL FASCIA/ZZ GAUGE
 - METAL RAILING SYSTEM
 - GLASS RAILING SYSTEM
 - STEEL TRELLIS DETAIL
 - NATURAL STONE VENEER
 - TILE VENEER (CERAMIC OR PORCELAIN)
 - PRE-FINISHED METAL SIDING (22 GAUGE)

RESIDENTIAL SENIOR
INDEPENDENT LIVING
EXTERIOR ELEVATIONS

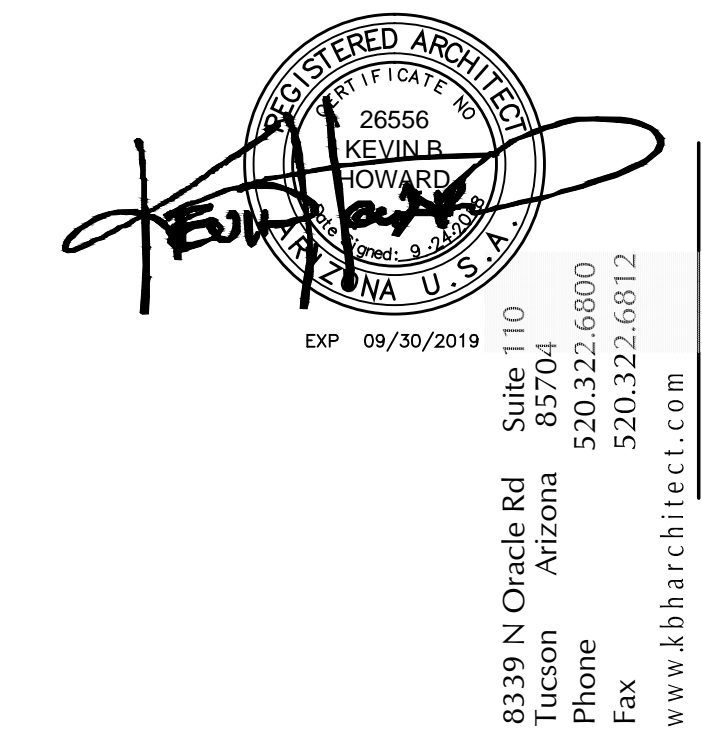
© 2018 Kevin B Howard Architects, Inc.
All rights reserved.
THESE DRAWINGS ESTABLISH THE GENERAL
STANDARDS OF QUALITY AND DETAIL FOR
DEVELOPING A CONSTRUCTION CONTRACT.
ALL INFORMATION ON THESE DRAWINGS ARE
THE PROPERTY OF KBH ARCHITECTS AND
ARE INTENDED FOR THIS PROJECT ONLY.

Job: 2017-12
Date: 09.24.2018

REVISIONS:

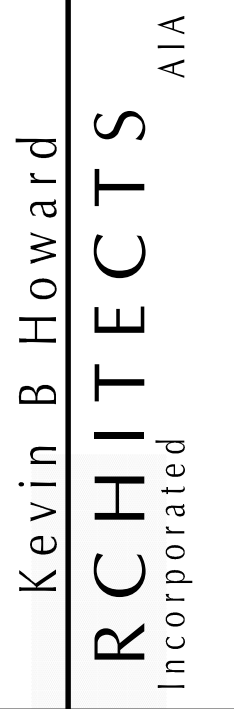
Drawn By:
J. E. Brown
H.S. Walker
Checked By:
J. E. Brown

A4.6



Kevin B Howard
ARCHITECTS
Incorporated
AIA

GRANDE Vita
a BioCity Enterprise
10243 E. Hampton Ave, Mesa, Arizona, 85209



RESIDENTIAL SENIOR INDEPENDENT LIVING BUILDING SECTION

Drawn By:
J. E. Brown
H.S. Walker

Checked By:
J. E. Brown

A4.7

TRANSVERSE BUILDING SECTION

SCALE: 1/8" = 1'-0"